

SIBERIA AIRLINES ET POLICY AFTER 1st JUNE 2008 INSTRUCTION FOR BSP AGENTS

Dear Agent,

This instruction is to clarify E-Ticket and Paper-Ticket policy of Siberia Airlines in BSP after 1st June 2008, when BSP would become ET-only.

On the majority of routes performing by Siberia Airlines electronic ticket can be issued through BSP. But we would like to inform you about situations when ET through BSP is not possible.

Special cases when you CAN issue ET:

- INFANTS
- GROUPS
- OPEN SEGMENTS

NOTE: ET is eligible for routes which include interline segments, IF this route is ET eligible for interline partner AND IF there is not Paper-ticket only interline agreement.

TABLE 1: List of interline agreements of Siberia Airlines, at 01 June 2008

Paper ticket only				Electronic ticket	
A9	Georgian Airways	OK	Czech Airlines	AA	American Airlines
BT	Air Baltic	OZ	Asiana Airlines	AB	Air Berlin
B2	Belavia	QB	Georgian National	AY	Finnair
CA	Air China	QF	Qantas	BA	British Airways
EY	Etihad Airways	QH	Kyrgyzstan	CX	Cathay Pacific
FV	Rossiya Airlines	RO	Tarom	CZ	China Southern Airlines
HF	Hapag Lloyd	SK	SAS	DL	Delta Airlines
HU	Hainan Airlines	TE	FlyLAL	EK	Emirates
JP	Adria Airways	TG	Thai Airways	FT	Siem Reap
J2	Hava Yollary	TK	Turkish Airlines	GJ	Eurofly
KC	Air Astana	TP	TAP Air Portugal	IB	Iberia
KM	Air Malta	U6	Ural Airlines	JL	Japan Airlines
LH	Lufthansa	VV	Aerosvit Airlines	KE	Korean Air
LY	El Al Israel Airlines	Z6	Dnieproavia	LO	LOT Polish Airlines
MH	Malaysia Airlines	UA	United Airlines	LT	LTU International
MS	Egyptair	2M	Moldavian Airlines	LX	Swiss
MU	China Eastern Airlines	3T	Turan Air	MA	Malev
OA	Olympic Airlines	7D	Donbassaero	MI	Silkair
				OS	Austrian Airlines
				PG	Bangkok Airways
				PS	Ukraine International
				QR	Qatar Airways
				RJ	Royal Jordanian
				SN	Brussels Airlines
				SQ	Singapore Airlines
				VN	Vietnam Airlines
				XF	Vladivostok Air

Special cases when you CAN NOT issue E-ticket:

- At June 1st, 2008, ABACUS doesn't support ET for Siberia Airlines
- If the route includes interline segments AND there is Paper-ticket only interline agreement
- If the route includes airport which is NOT ET eligible

TABLE 2: ET eligible and non-eligible airports of S7 route map at June 1st 2008

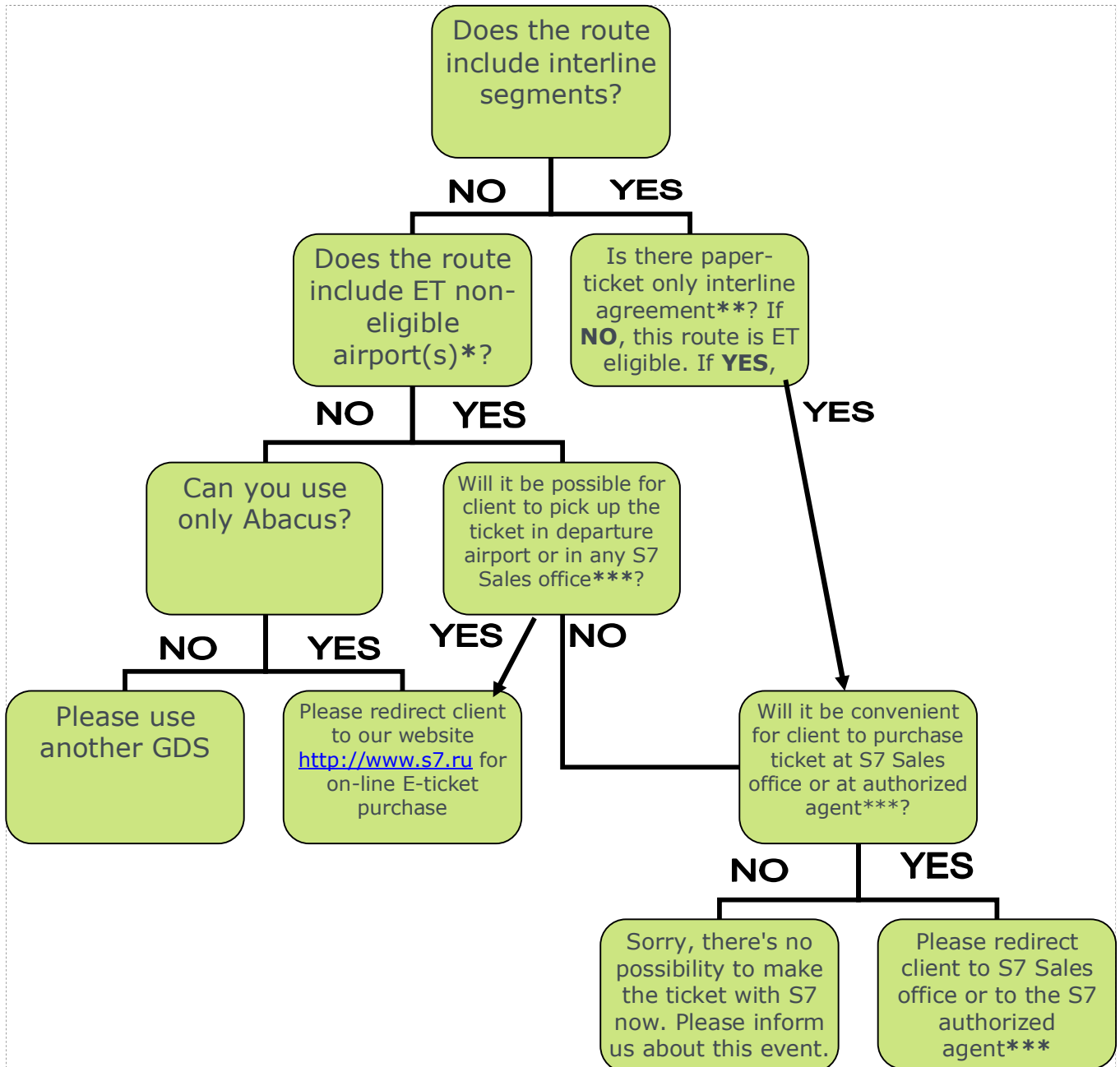
ET ELIGIBLE AIRPORTS				ET NON-ELIGIBLE AIRPORTS	
AAQ	Anapa	KUF	Samara		
AER	Sochi Adler	KZN	Kazan		
ASB	Ashgabat	LED	Saint Petersburg	BOJ	Burgas
ASF	Astrakhan	MUC	Munich	BUS	Batumi
BAK	Baku	NJC	Nizhnevartovsk	DXB	Dubai
BAX	Barnaul	NOZ	Novokuznetsk	FRU	Bishkek
BJS	Beijing Capital	NUX	Novy Urengoy	GDX	Magadan
BKK	Bangkok	NYM	Nadym	HTA	Chita
BTK	Bratsk	OMS	Omsk	KUT	Kutaisi
CEK	Chelyabinsk	OVB	Novosibirsk	LBD	Khudgant
DLC	Dalian	PEE	Perm*	LWN	Gyoumri
DME	Moscow Domodedovo	PKC	Petropavlovsk-Kamchatskiy	MCX	Makhachkala
DUB	Dublin	PWQ	Pavlodar	MRV	Mineralnye Vody
DUS	Dusseldorf	ROV	Rostov-on-Don	NSK	Norilsk
DYU	Dushanbe	SHE	Shenyang	OGZ	Vladikavkaz
EVN	Erevan	SIP	Simferopol**	OSS	Osh
FRA	Frankfurt	SYX	Sanya	PLX	Semipalatinsk
GOJ	Nizhniy Novgorod	TAS	Tashkent	TBS	Tbilisi
HAI	Hanover	TOF	Tomsk	TGD	Podgorica
ICN	Seoul Incheon	UFA	Ufa	TIV	Tivat
IKT	Irkutsk	UKK	Ust-Kamenogorsk	UGC	Urgench
INN	Innsbruck	URC	Urumqi	VAR	Varna
KBP	Kiev Borispol	UUD	Ulan-Ude		
KEJ	Kemerovo	UUS	Yuzhno-Sakhalinsk		
KHV	Khabarovsk	VOG	Volgograd		
KIV	Chisinau	VVO	Vladivostok		
KRR	Krasnodar	YKS	Yakutsk		

* Domestic flights only

** Effective from 01 July 2008

IMPORTANT: BSP agents are NOT permitted to issue BSP paper tickets if it is possible to issue electronic ticket. In case of violation, ADM will be issued on the full cost of the ticket. Please ALWAYS check if ET is possible because Siberia Airlines doesn't stop the process of ET expansion.

If the case seems to be ET non-eligible, please use the following what-to-do scheme and please follow the appropriate instruction.



* Please see TABLE 2.

** Please see TABLE 1.

*** Please see the list of appropriate airports (red-starred), S7 Sales offices and authorized agents at http://www.s7.ru/en/contact_us/ticket_offices/index.html. It is possible to issue paper ticket after 1st June 2008 on S7 blanks if ticket is purchased via S7 website or at S7 Sales offices or at S7 authorized agents. Please introduce yourself with this list carefully and don't hesitate to contact us and local offices/authorized agents with any questions.

ОАО «Авиакомпания "Сибирь"»
Россия, 633104, НСО, г. Обь-4
ОГРН: 1025405624430
ИНН/КПП: 5448100656/997650001



V-MPD implementation

At 1st of June, 2008, there will be no possibility to use V-MPD for non-ET cases. But Siberia Airlines is developing corporate technologies and it is probably that V-MPD will be implemented in future.

IMPORTANT: all information in this instruction is correct at time of going to press: 30/05/2008.

CONTACTS

If you have any questions concerning ET policy of Siberia Airlines, please contact us:

Elena Guk

BSP Specialist

e.guk@s7.ru

<http://www.s7.ru>